

Lens Tweaker Manual - 5.3.2.0

1. Introduction

Welcome to Lens Tweaker V3. In this document, we will be discussing how to calibrate a lens using Mo-Sys Lens Tweaker. The Lens Tweaker comes with Mo-Sys VP Pro Plugin allowing for fast lens editing and deployment within your virtual production workflow. For any questions about Mo-Sys VP Pro or about the lens calibration process, please email support.mo-sys.com.

1.1 Lens Workflow Overview

In this section we are going to briefly explain the full Mo-Sys lens workflow. You can see the diagram in Figure 1 below.

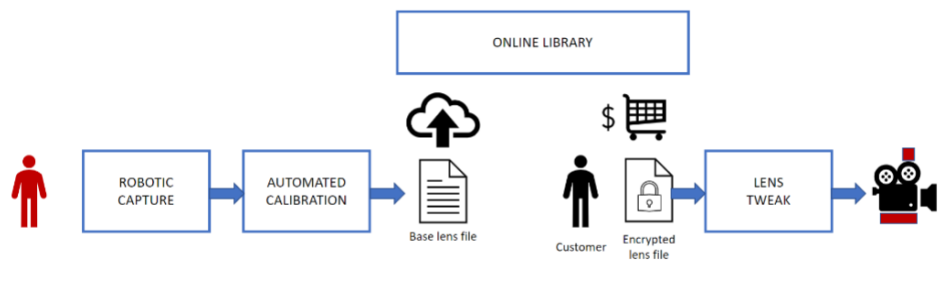


Figure 1. Lens workflow overview

First, Mo-Sys performs a capture of the lens using the lens calibration robot. Then we process the captured data and perform an automatic calibration which then is used to create a base lens file. This file then gets uploaded to the online library. Customers can find the lens on the Mo-Sys lens website (lens.mo-sys.com) and purchase it. The lens file will get scaled to match the sensor size of the camera selected by the customer. After purchasing the lens file, the customer can perform a tweak using the lens tweaker to fine tune the calibration to their specific lens/camera setup. This manual will help you to do that.

1.2 Setting up Unreal Project

Make sure to set the mode of Mo-Sys VP Pro Plugin to AR in Project Settings > Mo-Sys VP > Mo-Sys VP > Mode.

Within your project, click on the Mo-Sys dropdown menu and select Open Lens Tweaker as seen in Figure 2.

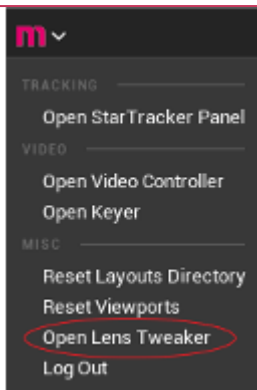


Figure 2. Actions and Settings

Now we need to turn our attention to the lens tweaker. You will likely be met with Figure 3 at first.

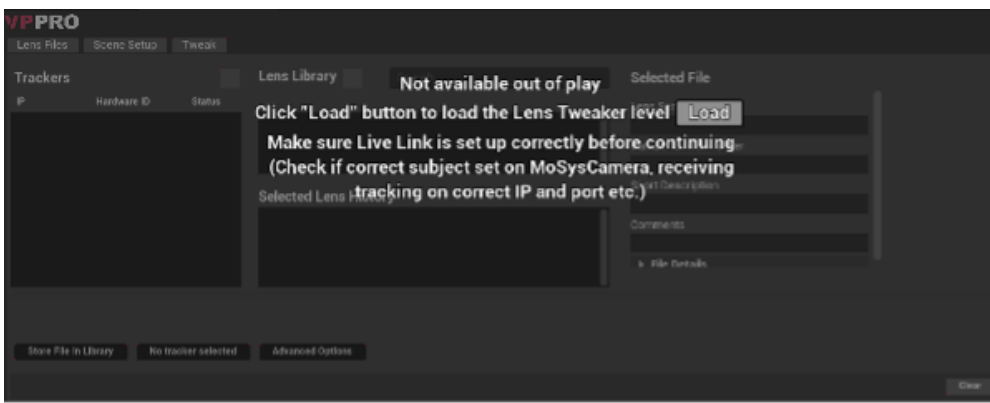


Figure 3. Lens Tweaker widget before setup

You will need to create a Live Link source to connect to your tracking solution via the Unreal `_Live Link Panel_`.

After you have set up your Live Link, click Load to load the lens tweaker level. Otherwise, the level can be found in the Mo-Sys VP Pro Plugin's StarterContent/Maps folder under the name LMoSysTweakerLevel.umap. If you are working on your current level, be sure to save it before clicking the `_Load` button.

Make sure your Live Link subject is set in MoSysCamera actor, MoSysLiveLink component in Subject Representation field.

Now that we have the Live Link set up and the scene loaded, all we need to do is enter PIE (Play In Editor) to start your calibration.

2. Selecting Lens File

In this section, we will be looking at selecting and loading a lens file.

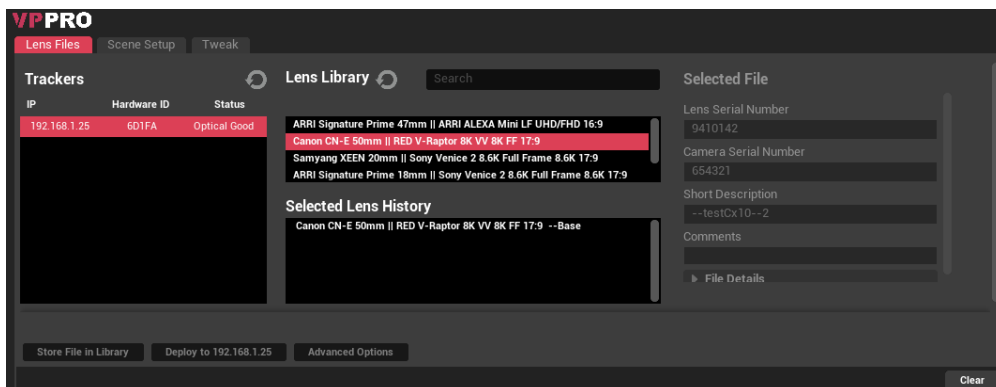


Figure 4. Lens files tab

2.1 Selecting Tracker

First, you will need to select your tracking solution as seen in Figure 5.

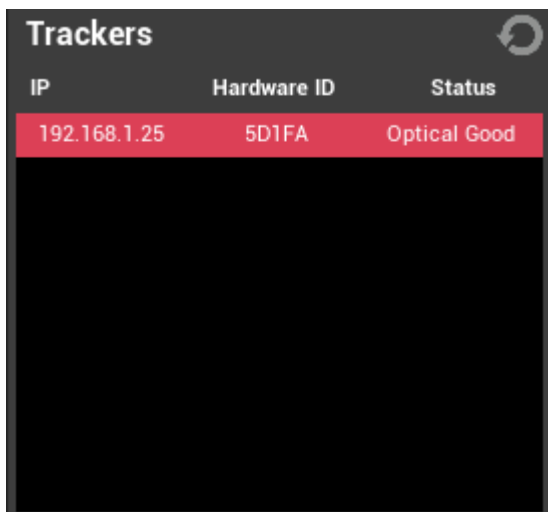


Figure 5. Trackers list

Selecting a tracker here will automatically assign the selected tracking solution to the account that is currently logged into Mo-Sys VP Pro.

If your tracking solution does not initially appear, try hitting the refresh button to rescan for devices on your network.

2.2 Selecting A File

As you can see in Figure 6, lens file section is made up of two parts:

- Your Lenses Library.
- Selected Lens History.

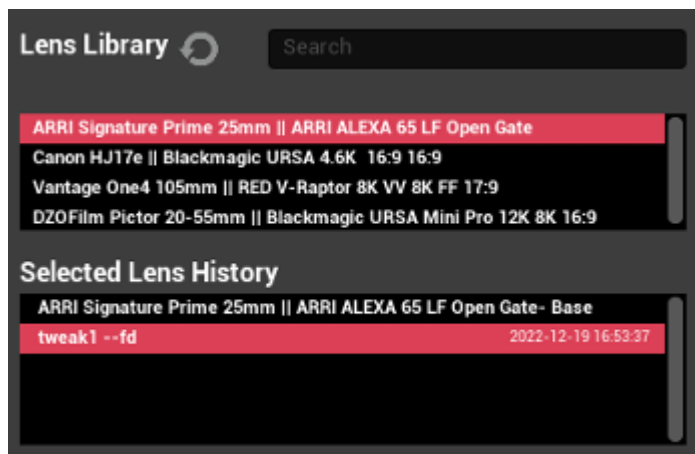


Figure 6. Lens files list

Your lens files are a list of all the lens files connected to your account. You can purchase lens files at lens.mo-sys.com.

When you select a lens file, the Selected Lens History will be populated with the history of all the tweaks that you, the user, have made on a lens file. By default, if a user has no previous tweaks on a lens file, there will be a base file available for tweaking.

After selecting a lens file from the Selected Lens History, this file will automatically be downloaded and loaded, ready for tweaking. This process will take slightly longer for zoom lens files.

2.3 Lens Information

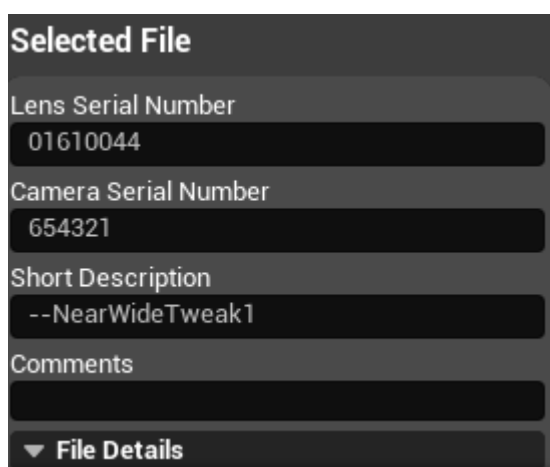


Figure 7. Lens information panel

After a lens file is successfully downloaded and loaded, information about this lens will automatically populate the Selected File section. In this section, you can change the serial number of the lens and camera as well as give a short and more in-depth description in the comments field. The short description will become the display name for the Selected Lens History section. Upon expanding File Details section, you will be able to see more information about the lens file (See Figure 8).

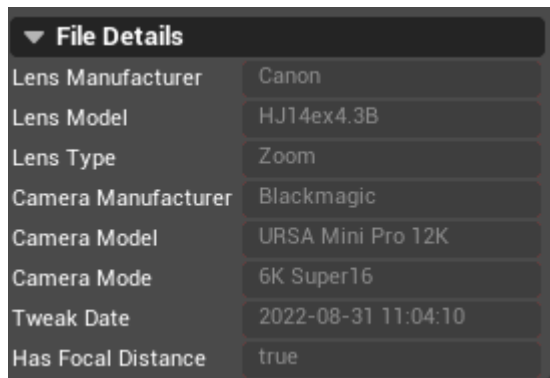


Figure 8. File details

2.4 Saving and Deploying

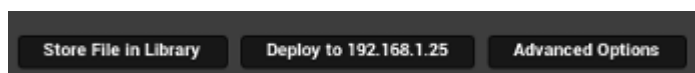


Figure 9. Upload file buttons

These buttons are mostly used at the end of the calibration process. Here you can store your calibration in your personal collection of files, deploy your lens file to the selected tracker and use advanced options.

When a user stores a lens file, the file must have the following filled in:

- Lens serial number.
- Camera serial number.
- Short description.

2.5 Advanced Options

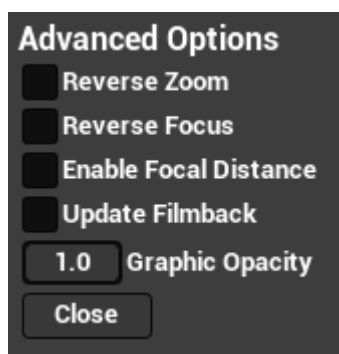


Figure 10. Advanced options panel

In the Advanced Options section (Figure 10), you can do the following:

- Reverse Zoom - reverses the direction of the zoom values in the lens file.
- Reverse Focus - reverses the direction of the focus values in the lens file.
- Enable Focal Distance - adds blur to the graphics depending on current focal distance value.
- Update Filmback - feature used for anamorphic lenses. Allows to desqueeze the image, controlled by anamorphic squeeze factor.
- Graphic Opacity - allows to make graphics in the scene transparent.

3. Scene Setup

This section goes through the Scene Setup widget. It also looks at the different graphics you can use and where they will be best used.

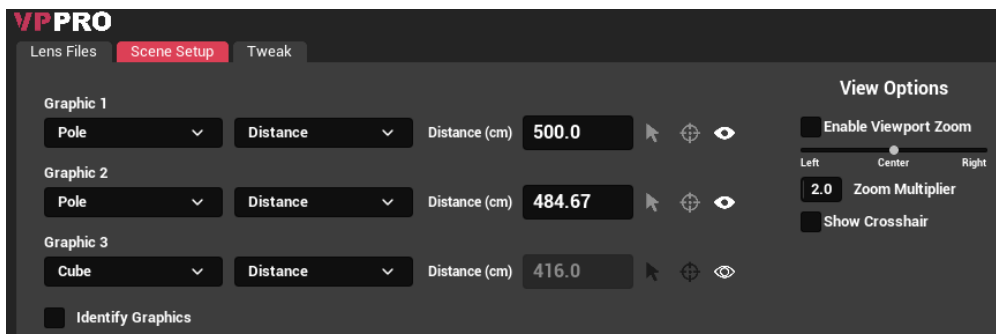


Figure 11. Scene setup tab

3.1 Graphic Types

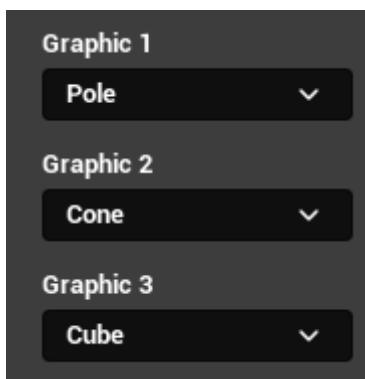


Figure 12. Graphic type dropdowns

There are three different graphic types, each is best in different situation.

3.1.1 Pole

Poles are great for sample editing. This allows you to easily see and match your lens distortion with a real-world reference, such as a c-stand.

3.1.2 Cone

Cones are best for Global Zoom Tweaks. This gives you a pinpoint with a larger graphic to match up with a user's 0 point.

3.1.3 Cube

A cube is best for real world testing with a large graphic. The cube is $1m^3$, allowing the user to place a real-world cube in the scene and check both distortions and EPD as field of view and centre shifts.

3.2 Placement Options

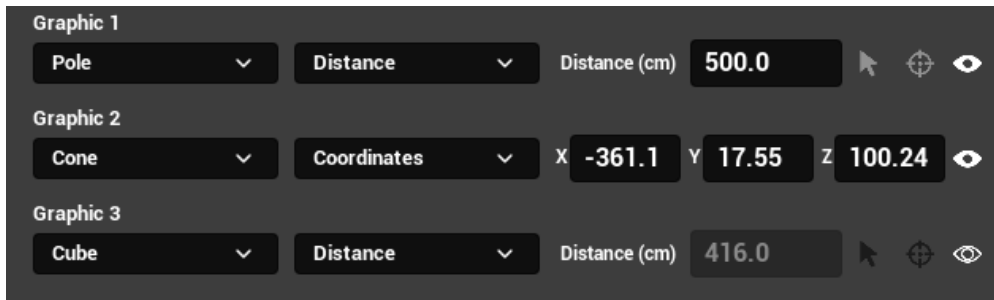


Figure 13. Graphic placement options

The user can place a selected graphic in two ways: by distance or by coordinates.

3.2.1 Distance

Distance placing is most commonly used with the pole graphic. The user should input the distance from the image sensor of the camera to the position they want to place their object. In most cases, this will be the distance from the image sensor of the camera to a real-world object.

The graphic can then be placed using the place-on-crosshair button (Figure 14).



Figure 14. Place on crosshairs button

This will place the graphic on the crosshair.

Alternatively, the graphic can be placed by clicking on screen with a mouse cursor. To do that, click place-by-mouse-click button (Figure 15).



Figure 15. Place by mouse click button

3.2.2 Coordinates

For coordinate positioning, you need to select Coordinates in the following dropdown.

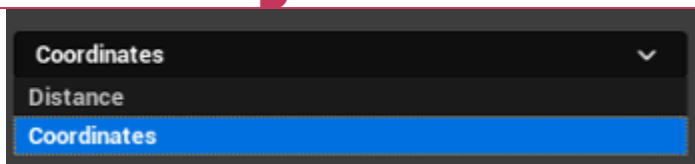


Figure 16. Coordinates vs Distance dropdown

This will then let the user enter an XYZ coordinate into the right most column (Figure 17).



Figure 17. Graphic Coordinates

XYZ in the Mo-Sys standard is across for X, forward for Y, and up for Z. As you change this value, the graphic position will automatically update.

3.3 Graphic Visibility

Finally, there is the visibility button. This button allows the user to hide and show the graphic.



Figure 18. Visibility button

To display graphic numbers, checkbox called Identify Graphics can be used (Figure 18).



Figure 19. Identify graphics button

4. Tweak Tab

In this section we will be looking at the functionality and options in Tweak tab.

4.1 Lens Tweaks

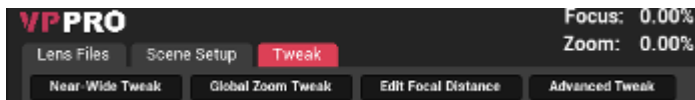


Figure 20. Lens tweaks panel

This part of the tab shows you the three methods of lens calibration. Near-Wide, Global Zoom Tweak, and Advanced Tweak (Figure 20). There is also an Edit Focal Distance panel which allows user to edit/add focal distance data. More on that in . **Note: When tweaking a prime lens, Near-Wide method will not be available.**

4.1.1 Global Zoom Tweak

This method of calibration looks at a lens files split into their zoom ranges (every sample with a consistent zoom value, see Figure 21). The user can then scale the field of view and distorted field of view based by a value entered by the user in the Scale Fx field. Centre shift offset can be added using Add Cx and Add Cy fields. Finally, the user can add offset to Entrance Pupil Distance (EPD) by entering a value in EPD Add.

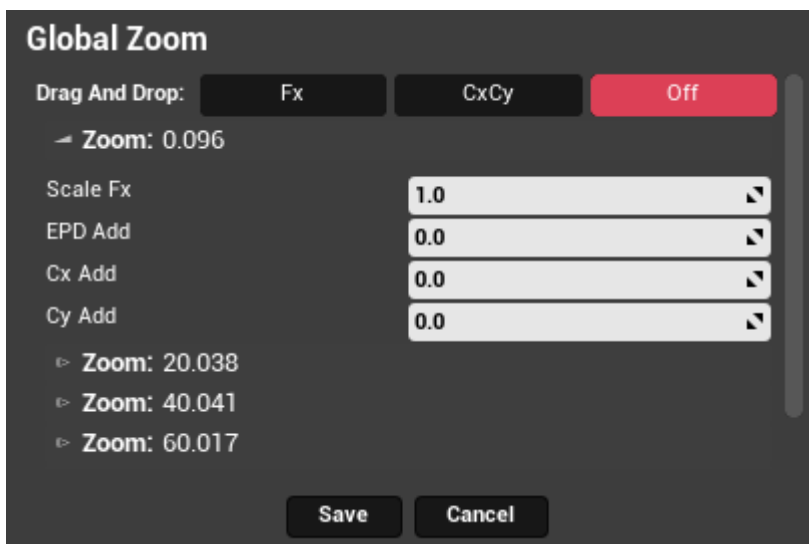


Figure 21. Global zoom panel

These changes will be applied across the zoom range.

Each zoom range is viewable as a collapsible dropdown, allowing the user to review all changes before saving.

By selecting Save the changes get saved into the lens file and smoothing is applied.

4.1.2 Near-Wide Tweak

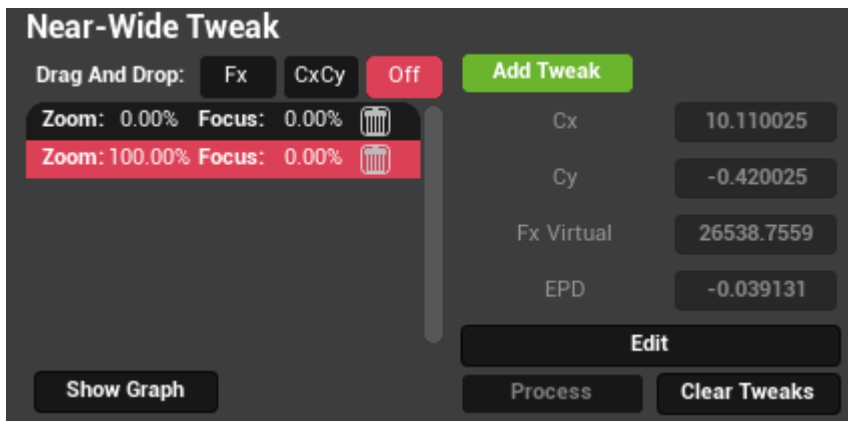


Figure 22. Near-wide tweak panel

Near-Wide tweak allows to simplify the tweaking process by tweaking just the far and the near ends of the lens. Linear offsets will be applied for the rest of the lens range. This usually gives good results provided the base calibration was not extremely far off. This method can only be used with zoom lenses.

To perform a tweak using a Near-Wide method, go to one end of the lens and click Add Tweak button. Then adjust the parameters until the graphics match the real world. After that, go to the other end of the lens and click Add Tweak button and adjust the parameters again. Values can be revisited and modified again by changing the lens position to that tweak point. The nearest tweak point will automatically be selected in the tweak list as you change the zoom position (Figure 23).

If parts of the lens file still look off after performing tweaks on the near and the far ends of the file, more tweaks can be added. To do that, go to the zoom position where calibration needs tweaking and click Add Tweak. Keep in mind that the first 2 tweaks always have to be the near and the far end of the lens.

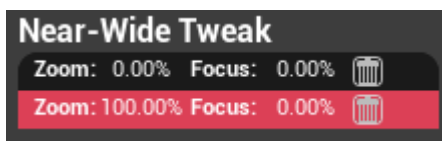


Figure 23. Tweaks list

To remove a tweak, use the trash can icon on the right. To clear all tweaks and start over, click Clear Tweaks button (Seen in Figure 24).

If the user prefers to keep the current lens parameters on one end of the lens but modify the other end, then add the tweak without editing the values.

After performing the tweaks, last thing to do is to click Process button (Seen in Figure 24). This will save the tweak and apply smoothing.

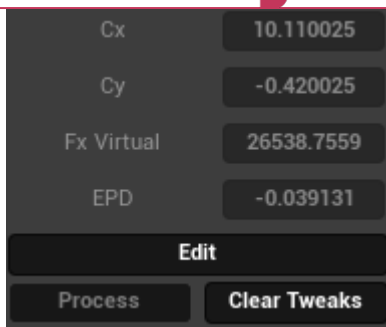


Figure 24. Near-wide tweak parameters section

Near-Wide tweak mode has an option to display graphs (See Figure 25).

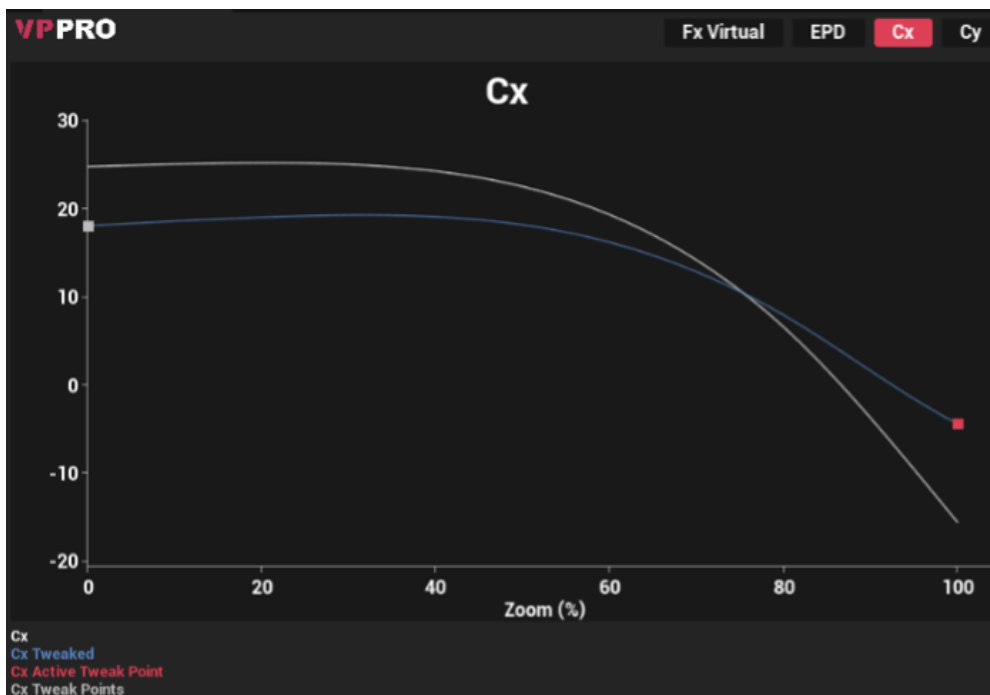


Figure 25. Near-wide tweak graph

To open it, click Show Graph button in the Near-Wide tweak panel. It updates real-time and allows you to see the values of the lens file and the tweaks that are about to be applied. There are two curves in the graph: the white curve represents values from the existing lens file and the coloured curve represents the new tweaked values. The red point is parameter value at current active tweak point and the grey point represents the other tweak point that is not currently being edited.

4.1.3 Advanced Tweak

This method of calibration is for experienced users only. In this section we will be discussing the lens parameters.

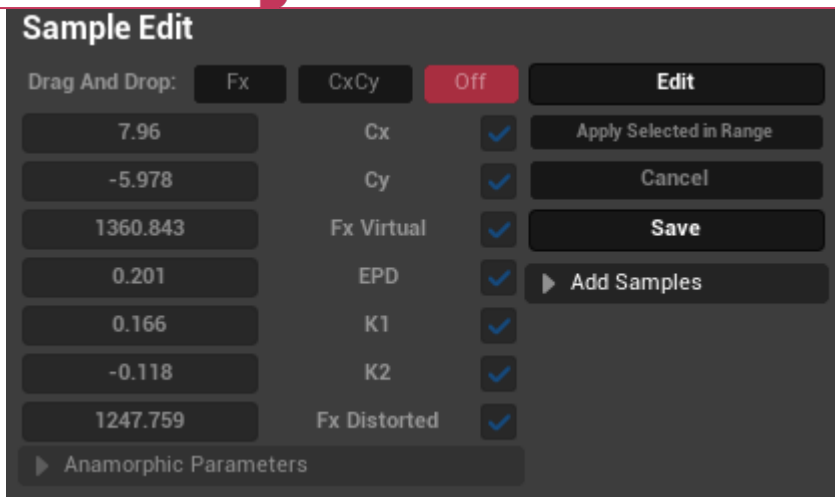


Figure 26. Advanced Tweak Panel

This area consists of 8 main lens parameters plus an extra parameter for anamorphic lenses, they are:

- Virtual Camera Fx.
- Entrance Pupil Distance.
- Principle Point Cx.
- Principle Point Cy.
- Distortion K1.
- Distortion K2.
- Distorted Fx.
- Anamorphic Squeeze Factor.

Virtual Camera Fx is a representation of field of view measured in pixels.

Entrance Pupil Distance is the distance from the image sensor to the entrance pupil (also known as the point of no parallax) measured in metres.

Principle Point Cx and Cy are your centre shift values. This is measured as pixels.

K1, K2, and Distorted Fx are all to do with distortion values that can be changed to match observed distortions in the image.

Anamorphic Squeeze Factor is the value that defines how much an image is squeezed in anamorphic lenses. Virtual Fy and Distorted Fy cannot be changed directly and are displayed for information purposes only. They change as Anamorphic Squeeze Factor changes.

This process allows user to edit values in individual samples. When the lens position is on a sample, the sample can be edited by selecting the Edit button.

Upon beginning the edit, the edit button turns into a Store button. This is used to store changes to the current sample. If the lens is not on a sample point, editing a sample will edit the closest sample to their current position. After making changes to a given sample, the user can select Apply Selected in Range. This will push the currently selected values, indicated by the toggle tick-boxes to the right of the parameters, through the rest of the zoom range of the current

sample. It is advised to use this at the beginning of each zoom range. After completing the full tweak, click Save button to save the calibration.

4.1.4 Adding Samples

With the Advanced Tweak option, the user can also add extra samples. This can only be done outside of sample editing.

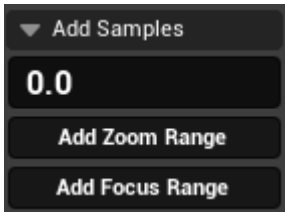


Figure 27. Add samples section

When adding samples, this does not add a single sample, but instead a line of samples across zoom or focus range. This can be done by entering a percentage you want to add and selecting either Add Zoom Range or Add Focus Range.

If the user adds a zoom range, it will add as many samples as there are focus points in the lens file. For example, on a standard file, if a user adds a 10% zoom range, they will make samples at (10Z, 0F), (10Z, 25F), (10Z, 50F), (10Z, 75F), and (10Z, 100F).

When adding a focus point, the result will be the same but for focus. The tweaker will add as many samples as there are zoom points in the lens file. For example, if a user adds an 85% focus sample, they will have added (00Z, 85F), (20Z, 85F), (40Z, 85F), (60Z, 85F), (80Z, 85F) and (100Z, 85F).

4.1.4 Tweaking Using Drag and Drop

All tweak methods have an option to tweak Fx and CxCy by clicking and dragging on the viewport. If Fx is selected in Drag And Drop menu (Figure 28), make sure your calibration object is on the edge of the screen. Then, click on the virtual object and drag it so it matches the real world object. If CxCy is selected, make sure your calibration object is in the centre of the screen and then click on the virtual object. Drag it so it matches the real world object. Off button will disable tweak on Drag And Drop.



Figure 28. Drag and drop menu

4.2 Lens Data

Focus:	25.00%	2/5	1
Zoom:	30.00%	3/6	0.5

Figure 29. Lens data panel

The Lens Data Panel is broken down into 3 parts. A zoom/focus percentage, position in the lens file and distance from the sample.

4.2.1 Lens Percentage

The zoom and focus percentages are as simple as it sounds - the values that are passed from the tracking solution.

As a rule, 100% zoom is fully zoomed in and 100% focus is infinity.

4.2.2 Sample Position (Advanced Tweak)

This is a fraction number denoting which sample the user is editing. The denominator of this fraction is the full number of sample points across the zoom or focus. In most lens files, there are 6 zoom points and 5 focus points. However, this is not a hard and fast rule.

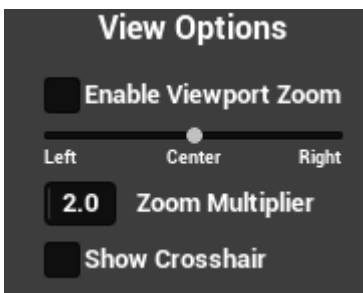
In Figure 29, we see 3/6 for the zoom position and 2/5 in the Focus position. This means we are editing the third zoom position, which would commonly be 40%, and the second focus position, typically 25%.

4.2.3 Sample Proximity (Advanced Tweak)

The final number for the zoom and focus data is a proximity indicator. When this value is on 1 or 0, this means we are at a sample point. In Figure 29, we have a focus proximity of 1 and a zoom proximity of 0.5 which means we are spot on on our sample point for focus, but as far as we could possibly be from the zoom sample.

4.3 View Options

View Options Panel allows the user to control viewport zoom and show crosshair (Figure 30). If viewport zoom is enabled, you use the slider to choose which part of the image to look at. The user can also click on Left, Center and Right to jump to the sides or the center of the image. Use Zoom Multiplier to specify how much zoom you need. Lastly, check Show Crosshair to show crosshair in the viewport.

**Figure 30. View Options**

4.4 Focal Distance Edit

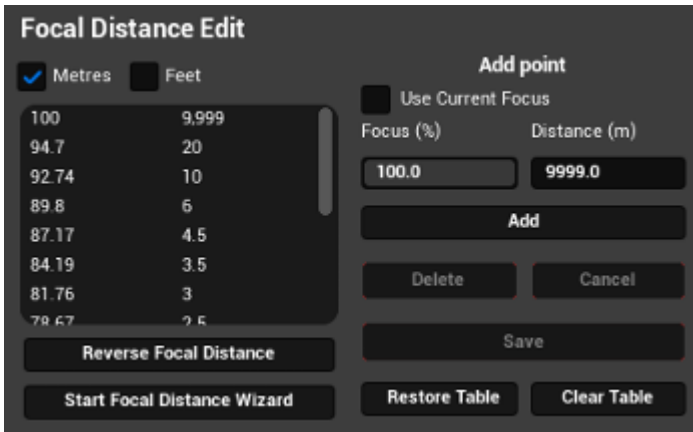


Figure 31. Focal distance edit panel

The Focal Distance Edit Panel allows the user to edit or recreate the focal distance table for the selected lens file.

4.4.1 Distance Units



Figure 32. Focal distance units section

The user can switch between metres and feet for distances. By default, the distance data will be read out as metres.

4.4.2 Adding and Editing Distance Data

In this part, the user can add, edit, or delete focal distance points. The user can enter a focus percentage and a distance in metres or feet, depending upon the units selected. Then, select Add to add the point. If the user selects a point from the list, this Add button will become an Edit button, allowing the user to edit a distance or focus percentage on the selected sample.

The user can also select a sample and delete a point by clicking the Delete button.

When the user has finished editing or creating their focal distance table, they can press Save. This will save the focal distance table into the lens file.

If needed, the user can also reverse the focal distance chart by clicking the Reverse Focal Distance button.

To clear all focal distance edits and restore original table, click the Restore Table button.

To delete all edits and have an empty table click the Clear Table button.

4.4.3 Focal Distance Wizard

By clicking Start Focal Distance Wizard button, the user can start the focal distance wizard. This walks you through the process of creating a focal distance table.

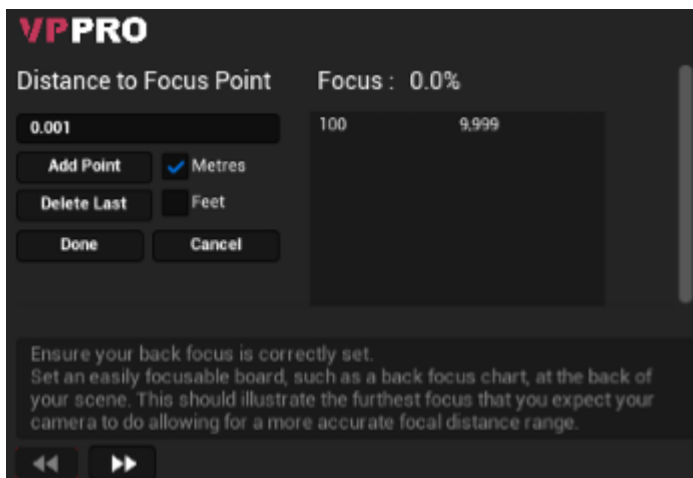


Figure 33. Focal distance wizard window

As the user adds a sample, it gets added to the list on the right. Automatically, there will be a sample of 100% focus at 9999m. This acts as a distance of infinity.

To add a point, enter the distance in the user's specified unit and press Add. The wizard will use the focus percentage that the lens is currently at.

The user can also delete the last point they entered by pressing Delete Last.

When happy with the focal distance table, press the Done button. This will load the values from the wizard and place them into the list found in the Focal Distance Tab. The user will need to click Save for the changes to be applied.

5. How to Perform a Tweak

This section will walk you through the lens tweaking process for the most common uses cases.

Note: here we assume that the StarTracker is already set up and auto-aligned.

5.1 Setting up Calibration Objects

Here we explain how to setup the studio for calibration. We use 2 vertical objects (e.g. lighting stand) at different distances:

1. One object should be close to the lens (roughly 1.5-3m).
2. The other object should be far from the lens, preferably at the far end of your studio space (usually >6m away).
3. Measure and note down the distance from the camera sensor to each of these objects (recommended to use a laser distance measure for accuracy).
4. Place markers (tape recommended) on the objects so they are in the centre of your camera image when your camera head is leveled.
5. Ensure both markers can be seen when panning your camera when fully zoomed in.
6. We recommend you to set your iris to something between F16-F22.
7. Check the backfocus is set correctly when calibrating a zoom lens.
8. Make sure both calibration objects are not aligned, there should be some lateral space between them.

5.2 Placing the Graphics

Go to Scene Setup tab (for help on how to use the interface refer to). Point the camera so that the crosshair is on the marker (tape) of the far object. Set Graphic 1 to Pole, Mode to Distance and enter the distance from the camera sensor to the object. Then, click the crosshair icon to place the graphic into the scene. Repeat the process with the near object in the Graphic 2 row.

Note: It is important that Graphic 1 is always the far object.

5.3 Tweaking a Prime Lens

If you are tweaking a prime lens, it is best advised to use a Global Zoom tweak method. Click on Zoom 0 to open the tweaking panel. Set the focus of the lens to a position where both calibration objects are clearly visible and follow these steps:

1. Point the camera to the centre of the far object.
2. Use Cx Add and Cy Add to align the virtual pole with the calibration object (the cones of the virtual pole are pointing to where the marker (tape) of the calibration object should be).
3. Pan the camera so that the far object is on the right edge of the image.

4. Use Scale Fx to align the virtual graphic with the calibration object.
5. Pan the camera so that the near object is on the right edge of the image.
6. Use EPD Add to align the virtual graphic with the calibration object.
7. If EPD was changed, repeat steps 3 and 4 to make sure far object still matches.
8. Click Save.

5.4 Tweaking a Zoom Lens

If you are tweaking a zoom lens, Near-Wide tweak is a quick approach to making changes to the entire lens file.

However, it should only be used when, for example, a different active sensor mode is used on the camera or a minor change needs to be made to the lens file.

Steps to perform a Near-Wide tweak:

1. Set zoom to the widest (close to 0%).
2. Click Add Tweak, then Edit.
3. Pan the camera to the centre of the far object.
4. Use Cx and Cy to align the virtual graphic with the calibration object (the cones of the virtual pole are pointing towards where the marker (tape) of the calibration object should be).
5. Pan the camera so that the far object is on the right edge of the image.
6. Use Fx Virtual to align the virtual graphic with the calibration object.
7. Pan the camera so that the near object is on the right edge of the image.
8. Use EPD to align the virtual graphic with the calibration object.
9. Click Store.
10. Set zoom to the narrowest (close to 100%).
11. Repeat steps 2-9.
12. Click Process.

If tweaking the widest and the narrowest ends of the lens did not achieve required accuracy, more tweaks can be added. Change zoom to any position that needs tweaking and click Add Tweak. Then, repeat steps 2-9. Remember to add tweaks at the widest and narrowest ends of the lens first even if you don't need to tweak them. This will lock in the values for later when you add tweaks anywhere else in the zoom range. For best results try to add the subsequent tweaks as far away from other tweaks as possible (for example, if you have tweaks at 0% and 100% zoom, the next tweak should be around 50%, but anywhere in 40-60% range is good). Otherwise, unexpected changes can be applied to other parts of lens file. Therefore, it is a good idea to have a look at the graph to know what tweaks are to be applied to the lens file. After you have added tweaks, anywhere between the widest and the narrowest ends (tweaks number 3 or greater), you shouldn't modify the lens end tweaks again (tweaks number 1 and 2). If you want to do that, then you will have to revisit the rest of the tweaks and edit their values again or clear all of the tweaks and start again. Alternatively, Global Zoom Tweak can be used to perform tweaks at the zoom sample points. For help on how to perform it, refer to steps 1-6 in . Repeat the process for every zoom value in the lens file. After finishing the tweaks, don't forget to click

Save. To register the tweak, click Store File in Library. To deploy to StarTracker, click Deploy to [IP].

5.5 Adding Focal Distance

The interface for adding the focal distance is explained in . There is also a walkthrough of the process in Focal Distance Wizard. It can be opened from the Edit Focal Distance section of the Lens Tweaker.

Steps for adding focal distance:

1. Ensure your back focus is correctly set.
2. Set an easily focusable board, such as a back focus chart, at the back of your scene. This should illustrate the furthest focus that you expect your camera to do allowing for a more accurate focal distance range.
3. Turn the focus wheel so the board is in focus. After, using a laser distance measure, measure the distance from the sensor of the camera to the board.
4. Enter the distance in the input box and click Add.
5. Move the board forwards by a step or two.
6. Repeat the focusing and measuring until you are very close to the camera and the focus percentage is close to zero.
7. Click Save.

Note: Alternatively, you can use the values from the focus ring on the lens. However, use this method with caution - accuracy varies from lens to lens therefore it is recommended to measure the focal distances manually.

5.6 Advanced Tweak

If Near-Wide Tweak and Global Zoom Tweak didn't achieve the desired accuracy, Advanced Tweak can be used to tweak the individual samples of the lens file. After clicking Advanced Tweak, Sample Position and Sample Proximity information will appear in the lens data panel (Figure 26). For more information about these values, see Sections and .

The following are the steps for doing the first sample:

1. If tweaking a zoom lens, it is recommended to start at the narrowest zoom (100%).
2. Change focus to the far object that would be closest to being in focus. Remember that you are on a sample if sample proximity indicator is close to 0 or 1.
3. It is a good idea to re-place the graphics before starting the tweak. For that, refer to .
4. Assuming your virtual graphic and real-world object line up in the centre of your screen now, pan the camera left so the far object is on the right edge of your screen.
5. Use Fx Virtual to align the virtual graphic with the calibration object.
6. If there was a significant change on the Virtual Camera Fx you may need to replace your Graphic 1 here before repeating this step. At this point, your Graphic 1 and real-world object should match up at the centre of the screen and the right edge.

7. Pan right so that the far object is on the left edge of the screen.
8. If your Graphic 1 does not match the real-world object in the x-axis (too close or too far from the centre), then you need to adjust your pan offset:
 - Change Principal point Cx to being twice the number of pixels from the correct position as it currently is (e.g., 10px off becomes 20px off).
 - Pan left so that far object is back in the centre.
 - Place the Graphic 1 again so it matches the real world object.
 - Pan so that the far object is on the right edge of the screen.
 - Use Fx Virtual to align the virtual graphic with the calibration object.
 - Pan right so that the far object is on the left edge of the screen.
 - Check that the Graphic 1 matches the real-world object. If it does not, repeat step 8.
9. Pan the camera so that the near object is in the centre of the screen.
10. Re-place your Graphic 2 if Graphic 1 was re-placed during step 8.
11. Pan the camera so the near object is on the right edge of the screen.
12. Use **Entrance Pupil Distance** to align the virtual graphic with the near object. This value is expected to be below 0.4 on non-box lenses and is measured in metres.
13. Pan the camera so that the far object is halfway between the centre of the screen and the right edge ($\frac{1}{4}$ of the way on the screen).
14. Use K1 to align virtual graphic with the far object.
15. Click Store to store the edit.

Now change focus until you reach the next sample. Process for tweaking the subsequent samples:

1. Pan so the far object is in the centre of the screen.
2. Use Principal point Cx and Principal point Cy to align virtual graphic with the far object.
3. Pan the camera so that the far object is on the right edge of the screen.
4. Use Fx Virtual to align the virtual graphic with the far object.
5. Pan the camera so that the near object is in the centre of the screen. Doing this allows to double check your Cx and Cy values are correct, do not, however, change these values here.
6. Pan the camera so that the near object is on the right edge of the screen.
7. Use Entrance Pupil Distance to align the virtual graphic with the near object.
8. Pan the camera so that the far object is halfway between the centre of the screen and the right edge ($\frac{1}{4}$ of the way on the screen).
9. Use K1 to align virtual graphic with the far object.
10. Click Store to store the edit.
11. Change focus to the next sample and repeat steps 1-10 for all the focus samples.
12. If tweaking zoom lens, change to the next zoom sample and repeat the process.
13. After tweaking all the samples, click Save.
14. To register the tweak, go to Lens Files tab and click Store File in Library. To deploy to StarTracker, click Deploy to [IP].